

### Mission

The National Kidney Foundation of Wisconsin, Inc. (NKF) is dedicated to preventing kidney disease, improving the health and well-being of individuals and families affected by these diseases and increasing the availability of all organs for transplantation.

### Vision

Our vision is to reduce the public health and economic impact of chronic kidney disease.

Through advocacy and education, we will:

- reduce the number of individuals who develop chronic kidney disease
- expand access to treatment options that increase the longevity and quality of life for kidney patients
- Ensure that each person who needs a kidney transplant receives one
- Promote best practices and innovation to support clinical care and medical professionals
- Support patients and caregivers who live daily with chronic kidney disease

### The Need –Chronic Kidney Disease in Wisconsin

- Chronic kidney disease is on the rise due to the increasing number of adults diagnosed with Type 2 diabetes.
- There are 517,000 adults who have diabetes and another 1,550,000 who have pre-diabetes.
- Diabetes is the primary reason kidneys fail.
- When kidneys fail, a person requires dialysis or a transplant to live.
- There are 6,821 dialysis patients who live in Wisconsin, forty-four percent (44%) reside in Milwaukee and the surrounding four-county area.
- Over 1,300 men and women are waiting for a kidney transplant on any given day in Wisconsin. Currently, over 6,000 individuals are alive because they have received the *gift of life* from a deceased or living donor.
- There are 84,000 patients and families who live with a diagnosis of chronic kidney disease in Wisconsin.

## **Programs and Services**

### *Living Donation and Organ Donor Awareness*

The National Kidney Foundation is the leading advocate for organ and tissue donation. We are committed to increasing the number of individuals who receive a transplant. We increase public awareness of the critical need for organ and tissue donors through educational programs.

The *Capital City 5K Run/Walk for Organ Tissue & Eye Donation*, each July, involves the community raising awareness of organ donation and transplantation. The event began as part of the 2010 National Kidney Foundation U.S. Transplant Games®.



The annual *Spotlight on Life* event brought the “spotlight” back to organ and tissue donation in January, 2019. The evening featured a *Dancing with the Stars*-style competition with ‘celebrity’ dancers from Wisconsin’s organ donation organizations and transplantation centers.

### *Educational Programs*

The NKFw offers free informational sessions on living kidney donation and kidney transplantation. These programs provide a forum for patients to get accurate, unbiased medical information. Working with experts from the local transplant centers, the NKFw offered two programs this year. Patients, caregivers and interested community members could attend in person or virtually.

### *Donate Life Wisconsin*

Donate Life Wisconsin (DLW) is a collaborative effort among donation and transplant-related organizations to raise organ, tissue, and eye donation awareness. The NKFw is an active member of the organization. DLW is dedicated to saving lives and improving the quality of life by increasing organ, tissue, and eye donation through awareness campaigns and education in faith communities, workplaces and other community settings.

### *Patient and Community Services: Professional Education*

#### *Information and Educational Materials*

The NKFw responds daily to requests for assistance and information. Educational materials are provided FREE of charge to patients and the 120 dialysis units and four transplant centers in Wisconsin. Information on diabetes, high blood pressure and kidney diseases are distributed at community and workplace events, screenings and health fairs as a free public service.

*Medical Identification Jewelry* is a crucial service of the NKFw. The NKFw provides this jewelry FREE of charge to ensure the safety of dialysis patients, transplant recipients, living donors, and those at-risk for kidney disease. Each year, over 1,000 patients in Wisconsin benefit from this service.

#### *Patient Education Programs*

When you are living with any kind of chronic illness, information is one of the ‘best medicines’. In the last 12 months, the NKFw organized over a dozen evening programs featuring a wide range of topics. The programs were held in Milwaukee and broadcast online.

#### *Public Education/Community Services*

It is a goal of the NKFw to promote public education messages that raise awareness of kidney health and prevention. The NKFw reached people at dozens of health fairs, community events and screenings.



### *Professional Education*

The annual Dialysis Professionals Symposium is a continuing education program for nephrology nurses, dietitians, social workers and patient care technicians. Each year dialysis professionals gather in Madison for a day-long conference. Professional training sessions are also held in Northeast (Wausau) and Northwest (Eau Claire) Wisconsin.

### *Prevention and Community Screenings*

*KEEP Healthy* is offered in community settings where individuals may have limited access to healthcare. In 2018-2019, the NKF of Wisconsin offered *KEEP Healthy* screening programs in September and in April.



*Healthy Shelves* is a community partnership of the National Kidney Foundation of Wisconsin, UW-Extension Waukesha County FoodWise program and Mount Mary University Dietetics Department. Working together, these organizations support the nutritional health of food-insecure individuals living with diabetes, heart, and/or kidney disease.

### *Outreach*

Individuals who are at increased risk of developing CKD include African Americans, American Indians, Hispanics, Asians, and Pacific Islanders. These minority groups have a dramatically higher rate of diabetes and high blood pressure – the two leading causes of kidney disease. It is for this reason that the NKF of Wisconsin partners with the following organizations to promote awareness of kidney disease and early intervention among minority individuals:

State of WI Chronic Disease Program  
Carroll University – School of Public Health  
Hispanic Health Resource Center  
Feeding Wisconsin

Donate Life Wisconsin  
Mount Mary University  
UW-Extension

### *How People Show They Care*

The NKF of Wisconsin relies solely on public support to fund its patient and family education and services. Revenue is generated from individual contributions, memorial and honor gifts, bequests, special events, and through a vehicle-recycling program – Kidney Cars.

- The NKF of Wisconsin's Kidney Cars program raised over \$5,000. Used cars, trucks, vans, and boats are sold at auction or salvaged for parts.
- The NKF of Wisconsin is a member agency of Community Health Charities (CHC). CHC is the largest workplace giving campaign devoted exclusively to health. Employees contribute through paycheck deduction. The NKF of Wisconsin received over \$12,000 from Wisconsin workers.

**Board of Directors and Staff**

Board members serve a renewable one-year term.

**Officers**

Curtiss R. Elliott, RN, MPA (Chair)  
Kathleen Sprenger (Vice Chair)  
Jeffrey Noltner, CPA, MBA (Treasurer)

**Staff**

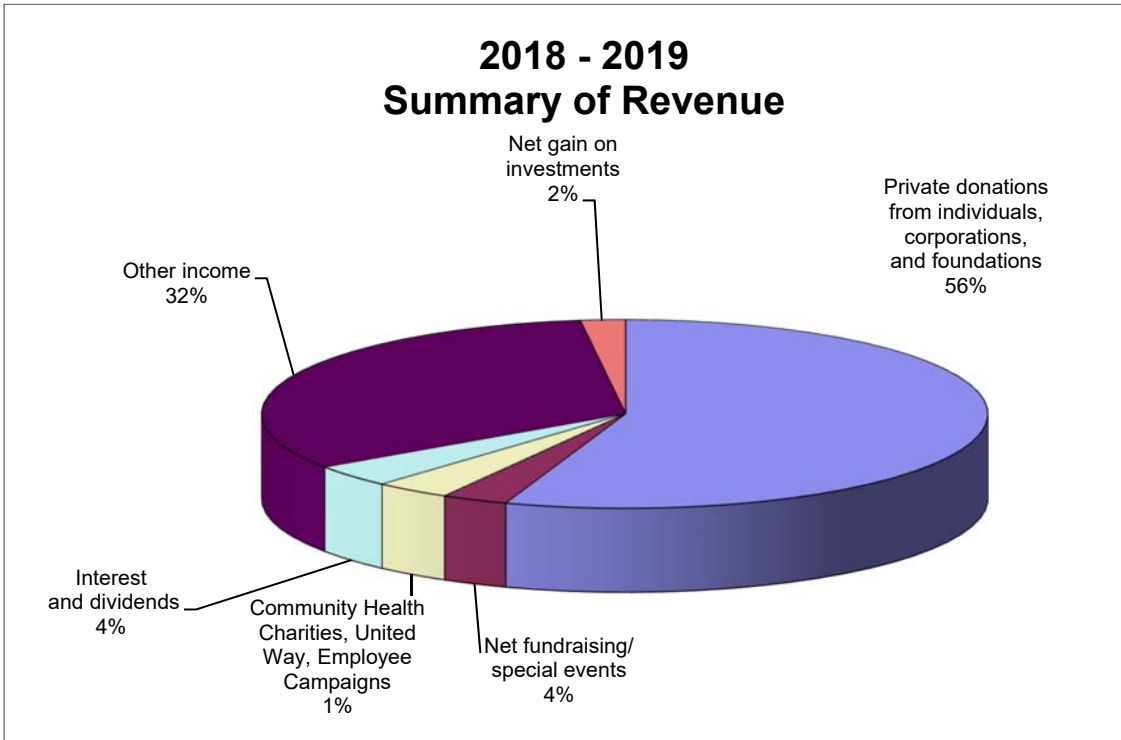
*Cynthia A. Huber – Chief Executive Officer*  
*Phone: 414-897-8669*  
*Amanda Pollock*  
*Director of Business Information*  
*Mary Pat Rick*  
*Community Relations Coordinator*

**At-Large Members**

Alyse Bartczak  
Ashraf El-Meanawy, MD  
Michelle Graham, MD  
Adam Jardine  
Robert Krieghoff  
Ahmed Malik, MD  
John Meier  
Elise Preston  
Donna Triplett

The Board had the following meetings during the year:

Date	Location	Time
10/29/18	Bostik, Inc. 11320 W Watertown Plank Rd Wauwatosa, WI 53226	6:00pm
2/7/19	Bostik, Inc. 11320 W Watertown Plank Rd Wauwatosa, WI 53226	6:00pm
4/29/19	Hub for Collaborative Medicine, Room A1520 Medical College of Wisconsin 8701 W Watertown Plank Rd Wauwatosa, WI 53226	6:00pm
6/24/19	Jewish Family Services 1300 N Jackson St Milwaukee, WI 53202	6:00pm



<b>PUBLIC SUPPORT AND REVENUE</b>	
Private donations from individuals, corporations, and foundations	\$ 293,383
Net fund raising/special events	15,560
Community Health Charities, United Way, Employee Campaigns	17,876
Interest and dividends	20,162
Other income	172,708
Net gain / (loss) on investments	10,573
<b>TOTAL PUBLIC SUPPORT AND REVENUE</b>	<b>\$ 530,262</b>

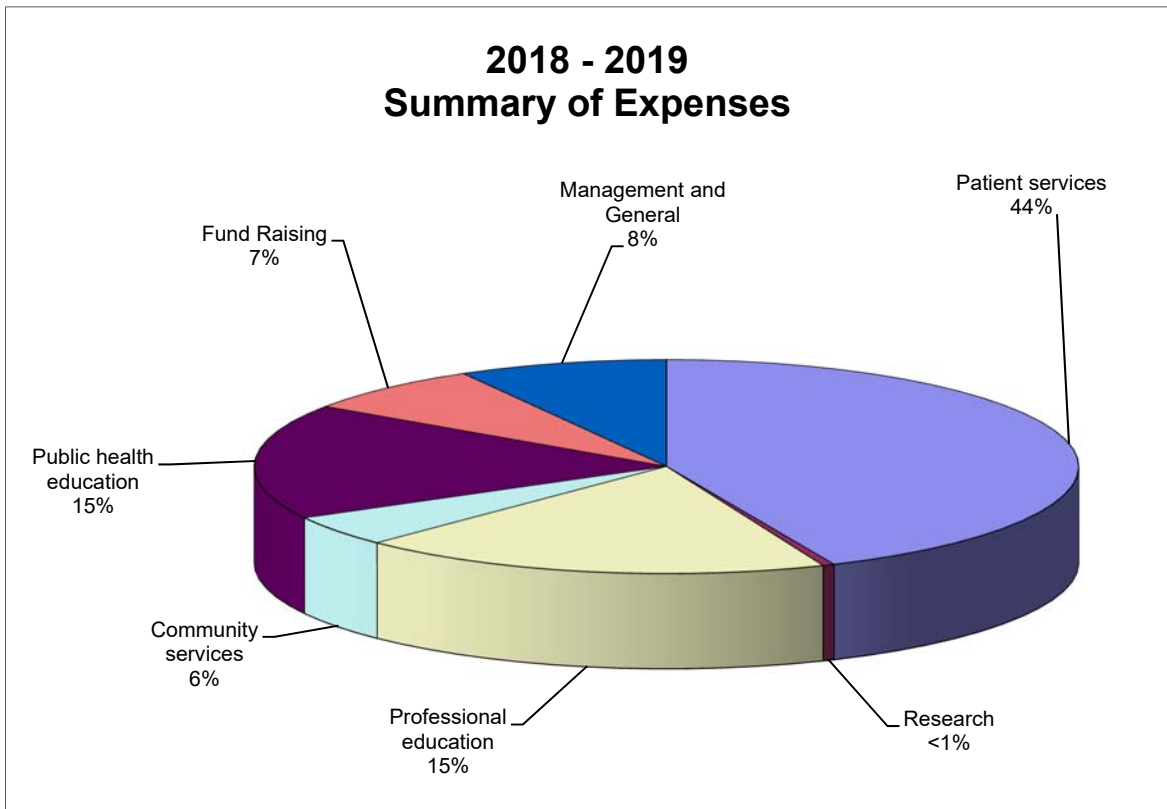
<b>Total Public Support and Revenue</b>	\$ 530,262
<b>Less Total Expenses</b>	<u>(475,933)</u>
<b>Change in Net Assets</b>	<u>\$ 54,329</u>

Net assets at beginning	\$514,972
Net assets at end	\$569,301

This summary has been prepared based on the 2018 - 2019 audited financial statements.

Complete copies of the audit are available from:

National Kidney Foundation of Wisconsin  
10909 W Greenfield Ave, Ste 201, West Allis, WI 53214-2379  
(800) 543-6393 | (414) 897-8669 | FX (414) 930-0337  
[info@kidneywi.org](mailto:info@kidneywi.org) | [kidneywi.org](http://kidneywi.org)



<b>EXPENSES</b>		
<b>Program Services</b>		
Patient services	\$206,328	
Research	2,171	
Professional education	88,283	
Community services	22,157	
Public health education	83,100	
Total Program Services		\$402,039
<b>Support Services</b>		
Fund Raising	34,801	
Management and General	39,093	
Total Support Services		73,894
<b>TOTAL EXPENSES</b>		<b>\$475,933</b>

The National Kidney Foundation of Wisconsin, Inc. shares a percentage of all revenue with our National Organization. In 2018-2019, this was 11% (\$53,201) of the National Kidney Foundation of Wisconsin's actual expenses. The following is an allocation of expenses paid by our National Organization from revenue received by all state affiliates:

Patient Services	10.96%	Fund Raising	8.74%
Research	4.08%	Management and General	10.89%
Professional Education	31.08%		
Community Services	24.28%		
Public Education	9.97%		